

REINHOLD ENVIRONMENTAL Ltd.



**2013 APC Round Table
& Expo Presentation**

July 8-9, 2013, in St. Louis, MO / Hosted by Ameren

All presentations posted on this website are copyrighted by Reinhold Environmental, Ltd (RE). Any unauthorized downloading, attempts to modify or to incorporate into other presentations, link to other websites, or obtain copies for any other uses than the training of attendees to RE's Conferences is expressly prohibited, unless approved in writing by RE or the original presenter. RE does not assume any liability for the accuracy or contents of any materials contained in this library which were presented and/or created by persons who were not employees of RE.

CFD and Physical Modeling of DSI/ACI Distribution

APC Round Table & Exposition

July 09, 2013

Matt Gentry

Airflow Sciences Corporation
mgentry@airflowsciences.com
734-525-0300



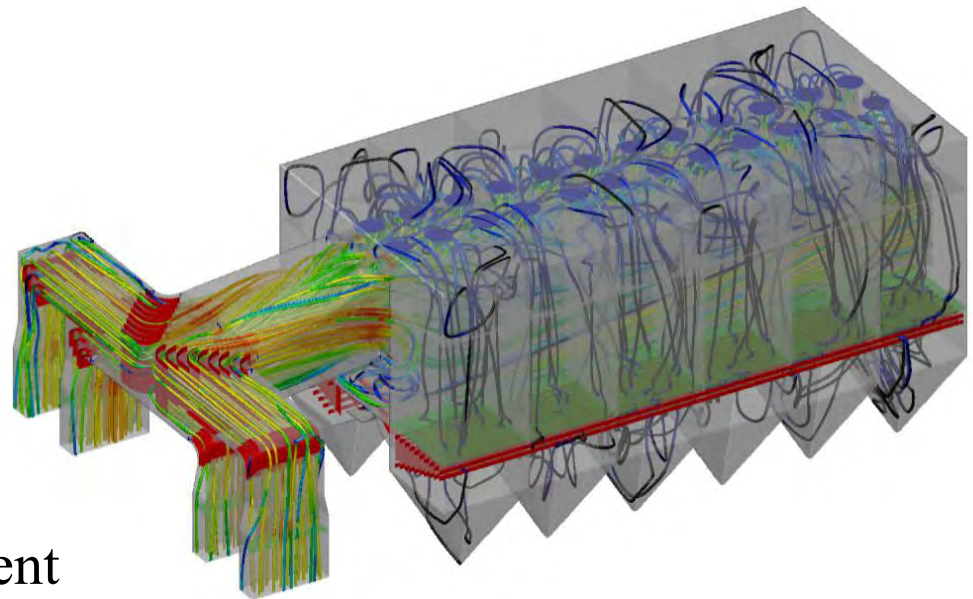
Outline

- ❖ Introduction
- ❖ Flow Analysis Techniques
- ❖ Application to Air Pollution Control Equipment
- ❖ Sorbent Injection Modeling
- ❖ Conclusions

Introduction

❖ Why is Fluid Flow Important to Industrial Equipment?

- Performance
 - Flow uniformity
 - Sorbent injection
 - Ash capture / build-up
- Operating costs
 - Pressure drop
 - Erosion
 - Corrosion
 - Sorbent Usage



❖ Applications

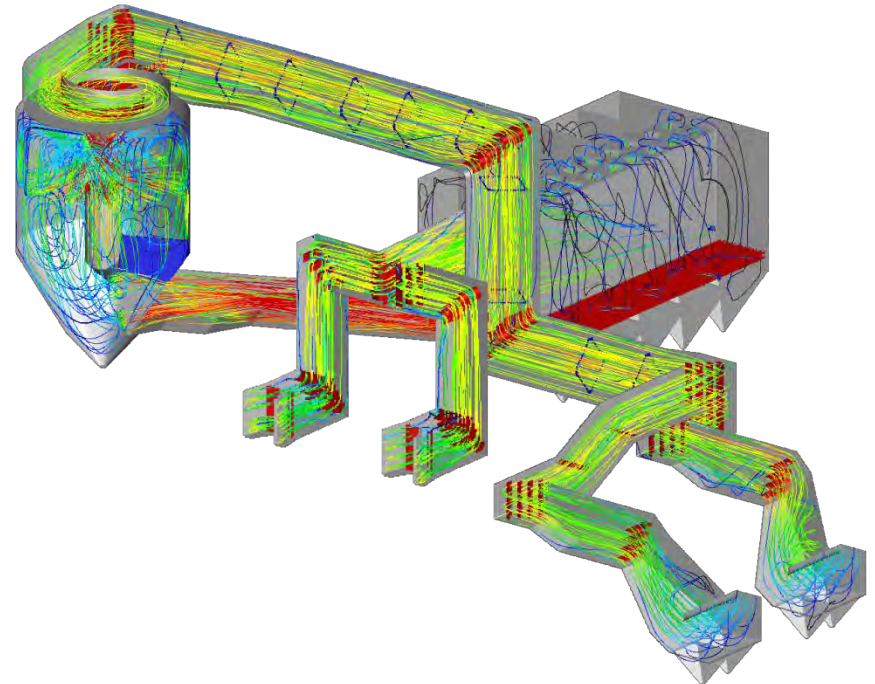
- Design of new equipment
- Retrofit of existing equipment
- Solving operational or maintenance issues

Outline

- ❖ Introduction
- ❖ Flow Analysis Techniques
 - Computational Fluid Dynamics (CFD)
 - Physical Flow Modeling
- ❖ Application to Air Pollution Control Equipment
- ❖ Sorbent Injection Modelling
- ❖ Conclusions

Computational Fluid Dynamics (CFD)

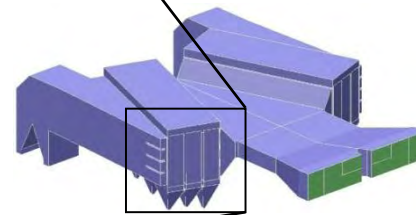
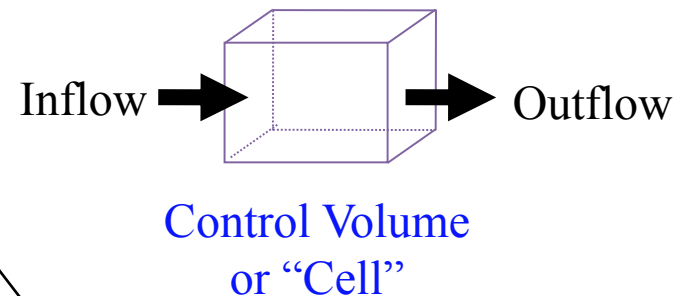
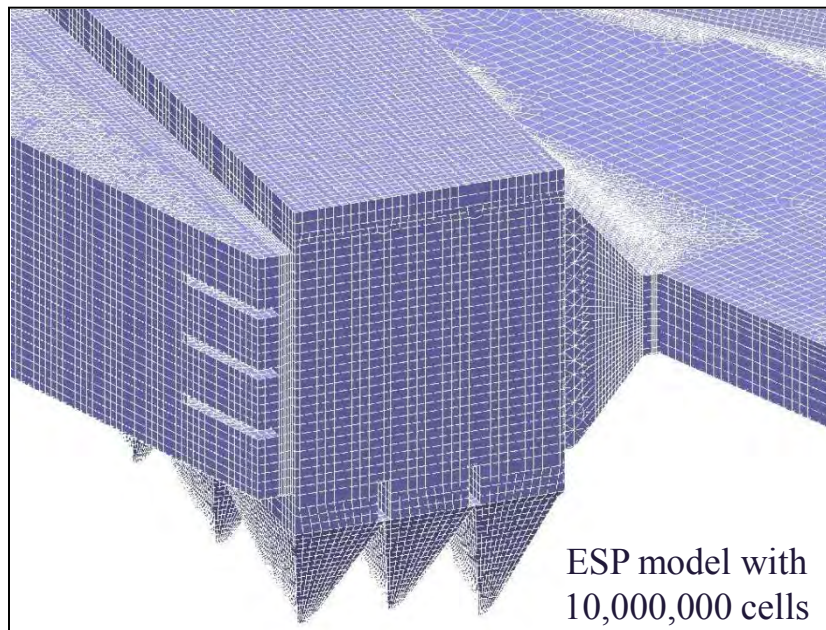
- ❖ Numerical simulation of flow
- ❖ Utilize high speed computers and sophisticated software
- ❖ Calculate flow properties
 - Velocity
 - Pressure
 - Temperature
 - Species
 - Particle streamlines



Computational Fluid Dynamics (CFD)

❖ Control Volume Approach

- Divide the flow domain into distinct control volumes
- Solve the Navier-Stokes equations (Conservation of Mass, Momentum, Energy) in each control volume



Physical Flow Modeling

- ❖ Lab representation of geometry
- ❖ Typical scale 1:8 to 1:16
- ❖ “Cold flow” modeling
- ❖ Visualize flow with smoke
- ❖ Simulate ash deposition
- ❖ Measure flow properties
 - Velocity
 - Pressure
 - Tracer gas
 - Dust/Particles



Physical Flow Modeling

Typical 1:12 scale
physical model

SDAs

Air Heater Outlet

PJFF
Compartments

Turning vanes

ID Fan Inlet

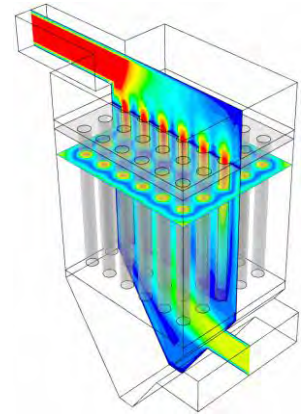
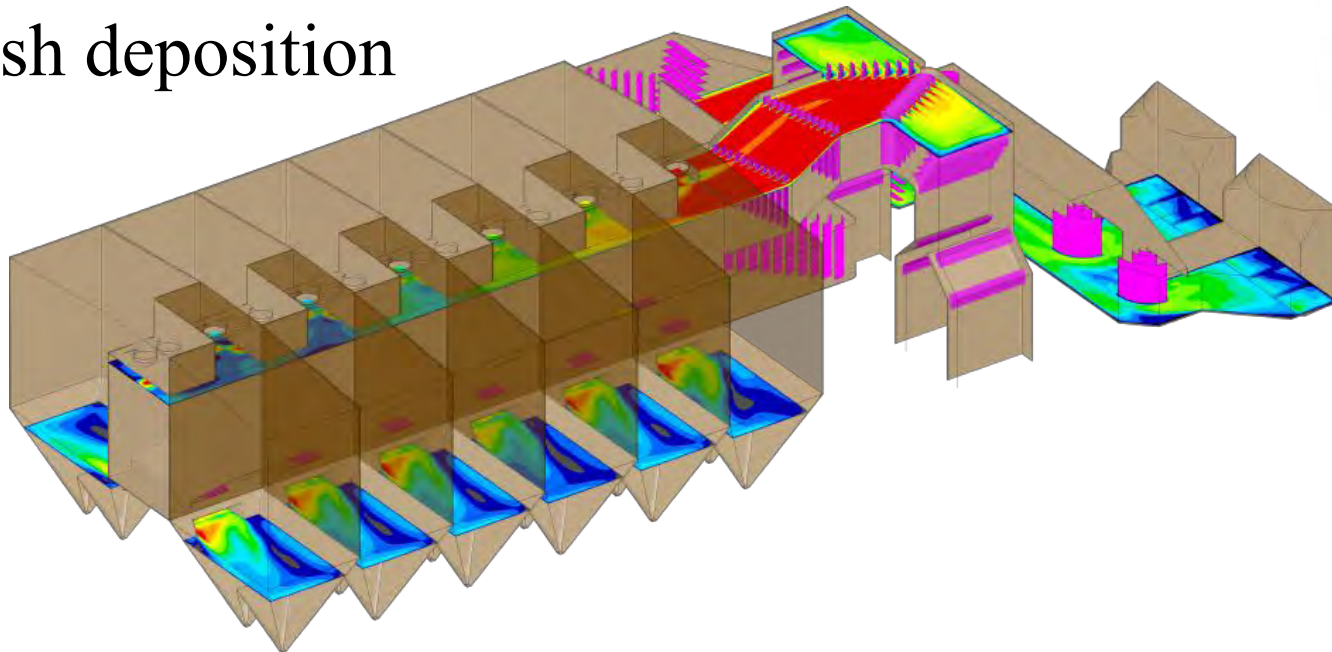


Outline

- ❖ Introduction
- ❖ Flow Analysis Techniques
- ❖ Application to Air Pollution Control Equipment
 - Fabric Filter
 - Sorbent Injection
 - Sorbent Dropout and Deposition
- ❖ Sorbent Injection Modelling Process
- ❖ Conclusions

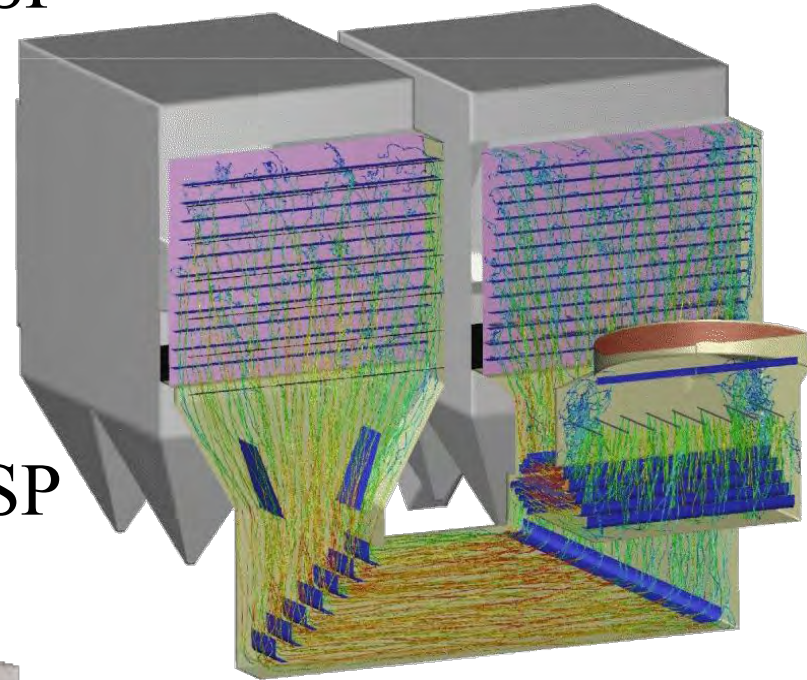
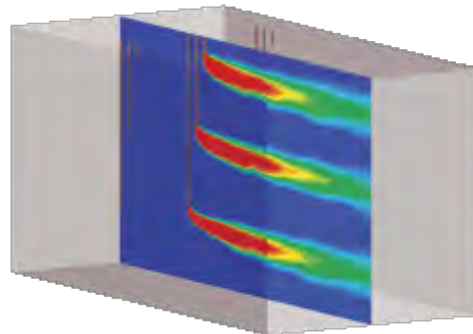
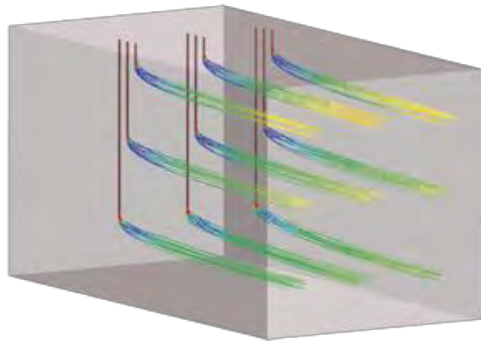
Fabric Filter Flow Modeling

- ❖ Uniform velocity distribution and equal balance between compartments
- ❖ Pressure loss
- ❖ Avoid bag erosion
- ❖ Ash deposition



Mercury / SO₃ Reduction

- ❖ Injection upstream of FF or ESP
 - Activated carbon
 - Lime, Trona, SBC, etc.
- ❖ Uniform injection
- ❖ Maximize residence time
- ❖ Maximize uniformity at FF/ESP



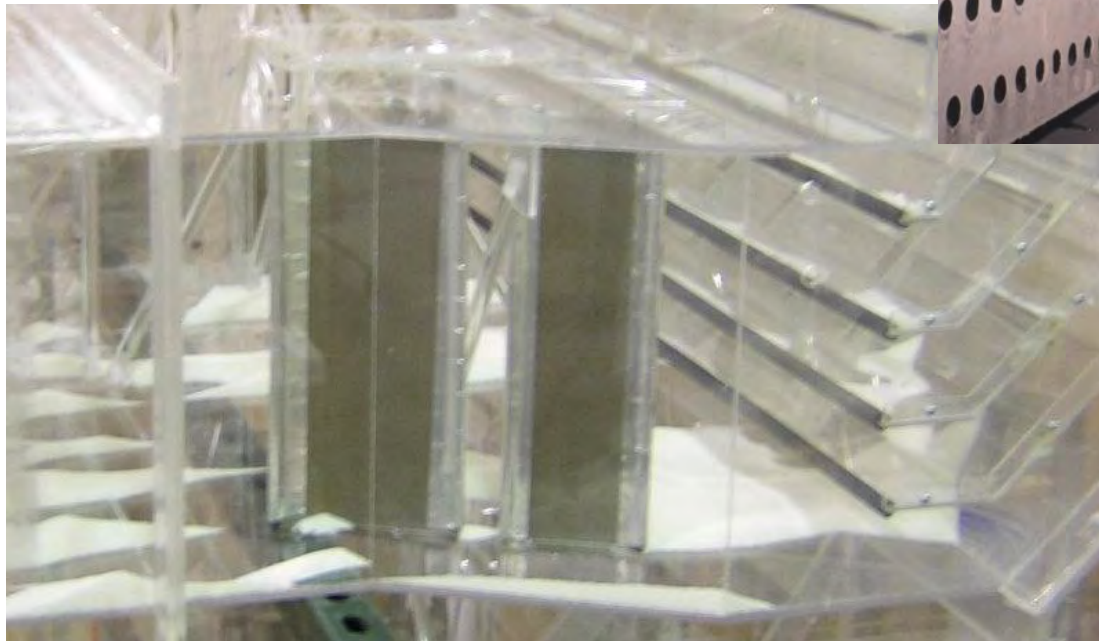
Ash/Sorbent Deposition

- ❖ Duct floors
- ❖ Turning vanes



Ash/Sorbent Deposition

- ❖ Drop out
- ❖ Re-entrainment



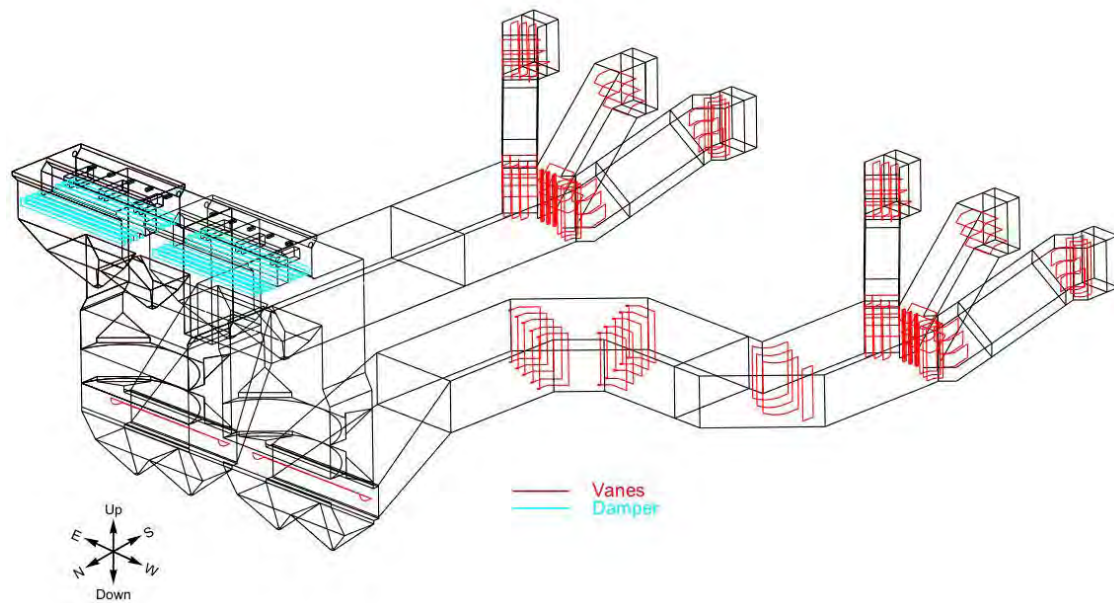
Outline

- ❖ Introduction
- ❖ Flow Analysis Techniques
- ❖ Application to Air Pollution Control Equipment
- ❖ Sorbent Injection Modeling
 - Process
 - CFD Applications
 - Physical Modeling Applications
 - Comparison
 - Future Considerations
- ❖ Conclusions

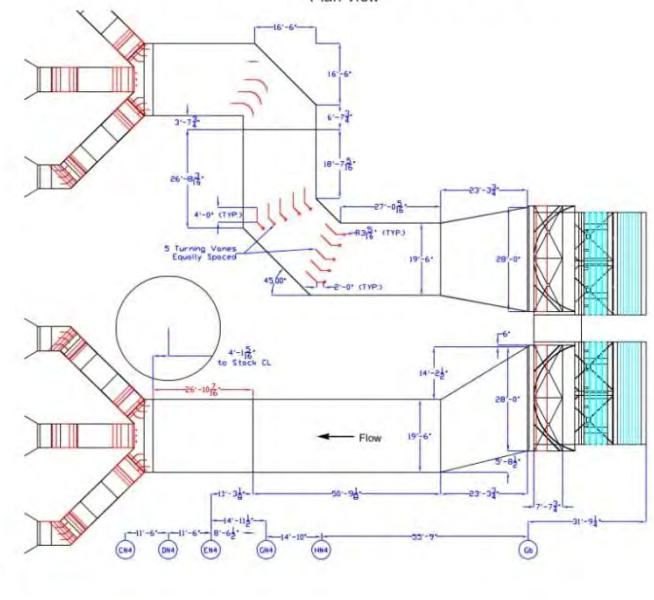
Sorbent Injection

❖ Sorbent Injection Modeling: The Process

- Review plant drawings and operating conditions
- Develop 3-D CAD model of the model domain



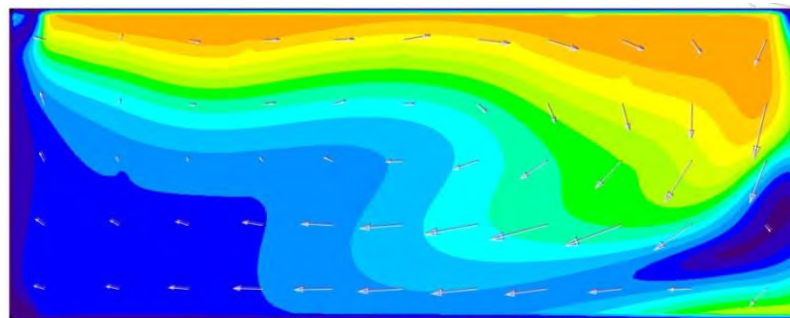
CFD Model Domain - ESP Inlet
Plan View



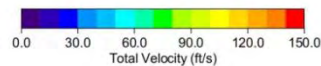
Sorbent Injection

❖ Sorbent Injection Modeling: The Process

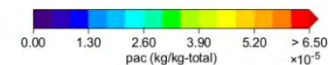
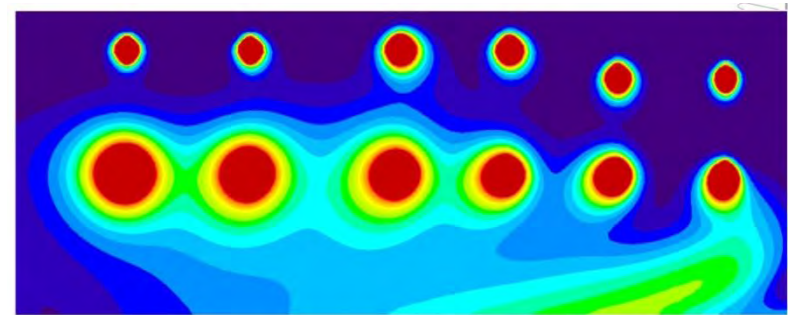
- Discuss the design parameters and restrictions regarding the injection lances (location, number of lance, etc.)
- Perform a baseline flow simulation with the initial injection grid geometry



Average Velocity = 62.5 ft/s
Streamwise Velocity RMS = 86.8%



Gas Velocity

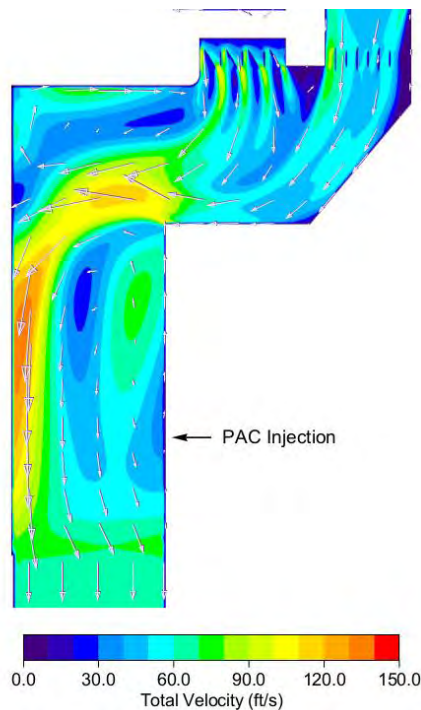


PAC Injection Concentration

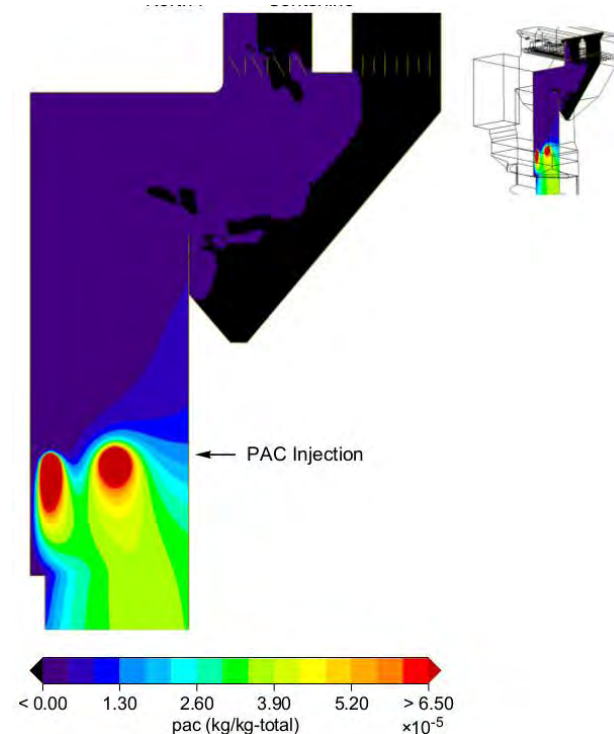
Sorbent Injection

❖ Sorbent Injection Modeling: The Process

- Issue a report with details of the flow and sorbent distribution throughout the model domain



Gas Velocity

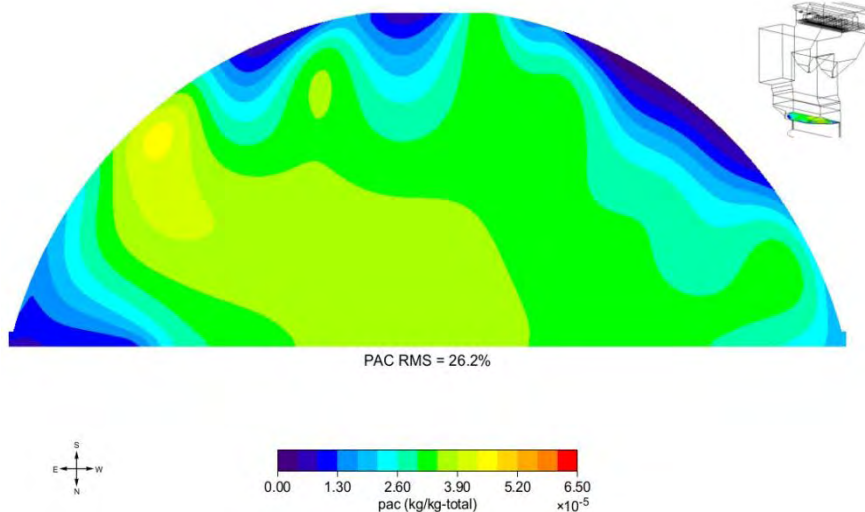


PAC Injection Concentration

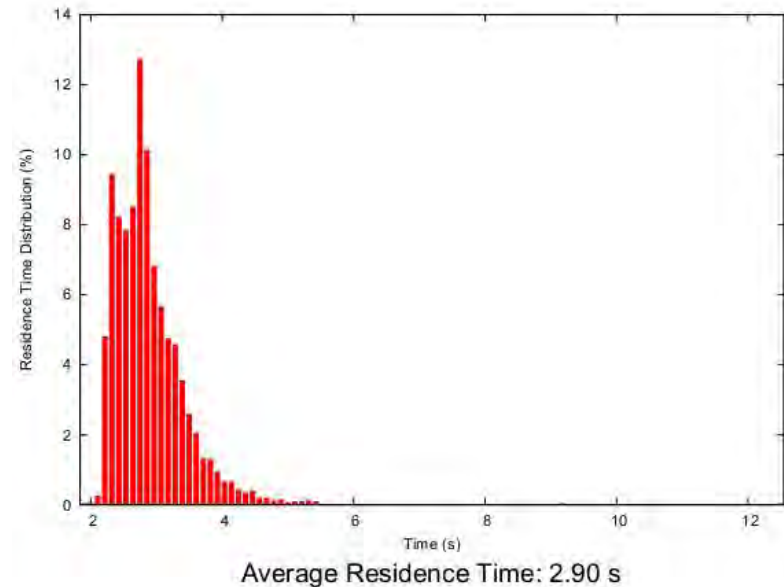
Sorbent Injection

❖ Sorbent Injection Modeling: The Process

- Particle residence time and sorbent uniformity at the target planes are presented



Residence Time Statistics - Air Heater Outlet to ESP A Inlet
Probability Distribution

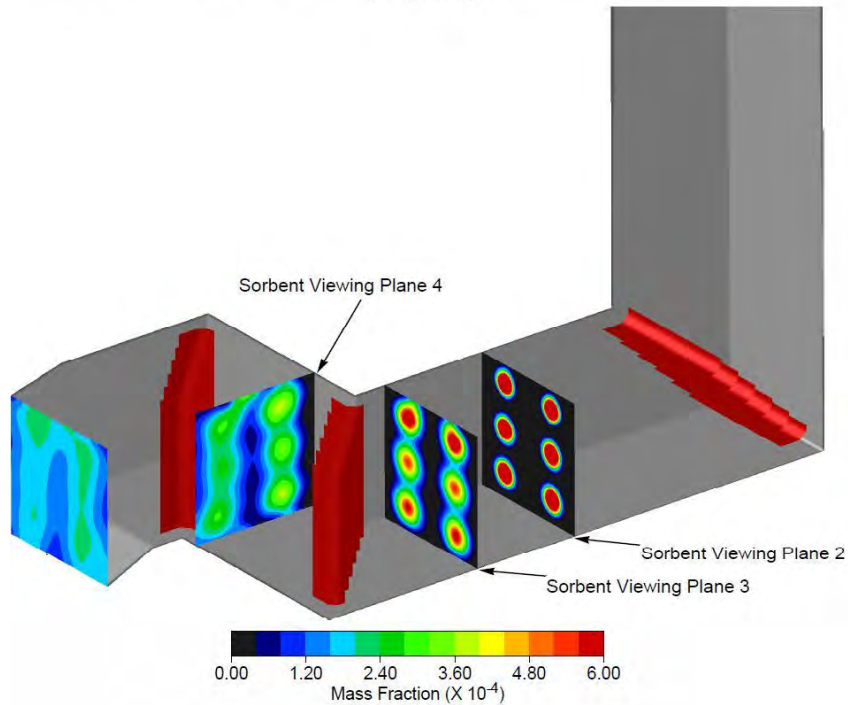


CFD Applications

❖ Example 1: Trona and Carbon Injection

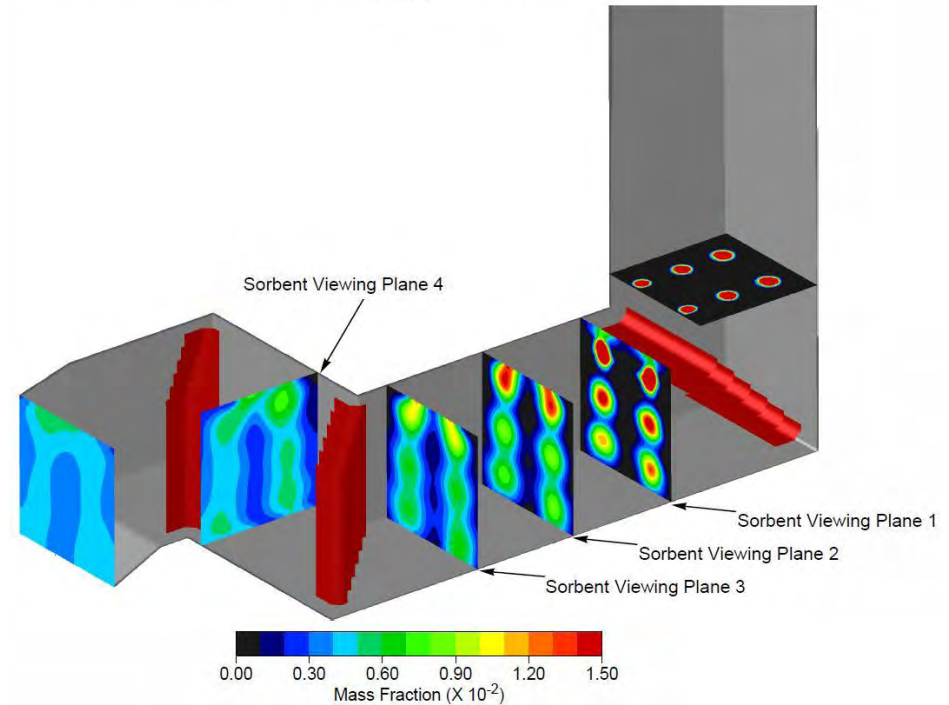
Unit 1 - Design 2 - Mass Fraction of Carbon

Isometric View



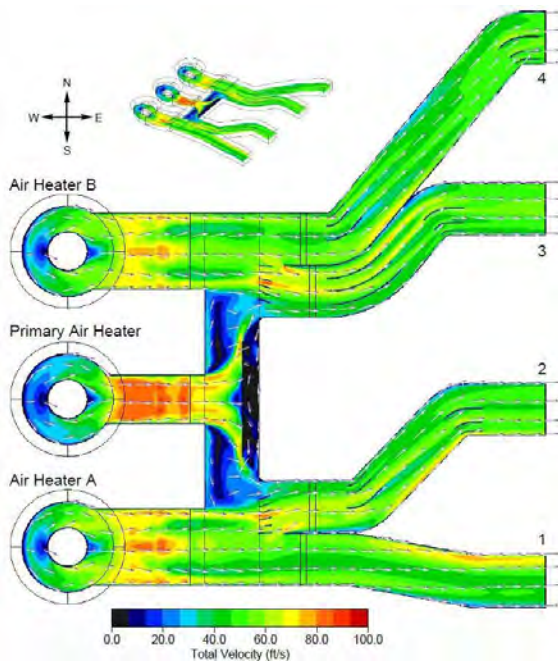
Unit 1 - Design 2 - Mass Fraction of Trona

Isometric View

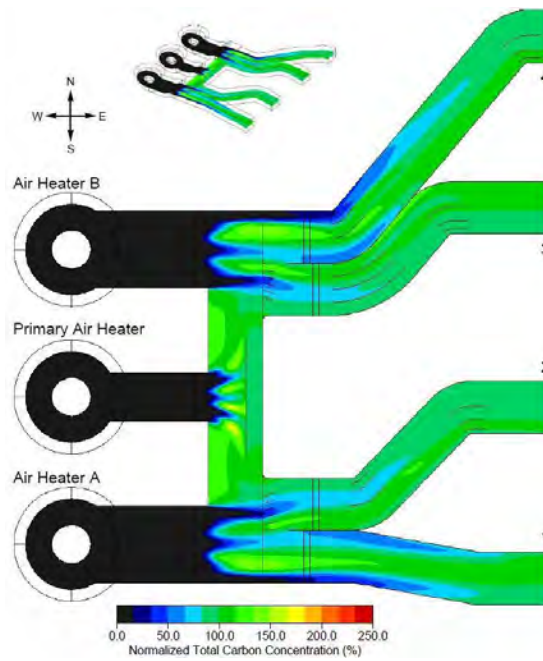


CFD Applications

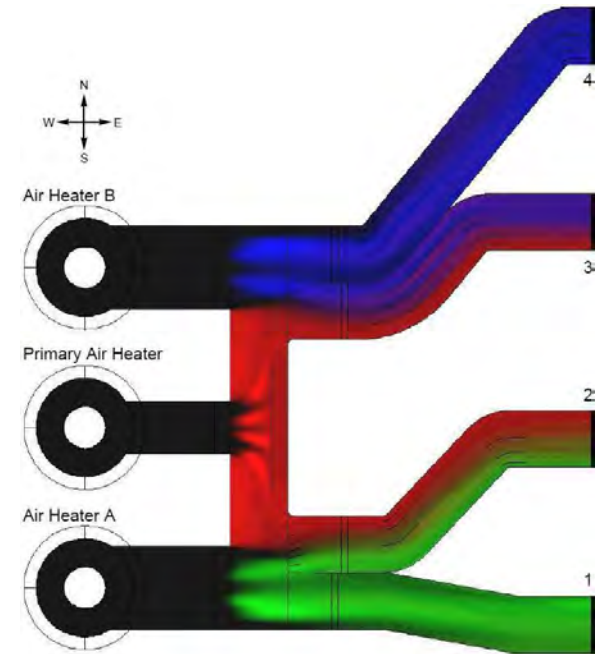
❖ Example 2: Carbon Injection with Multiple Air Heaters



Gas Velocity



PAC Injection Concentration



PAC Injection Balance

Physical Flow Modeling Applications



Physical Flow Modeling Applications

- ❖ Lab representation of lance geometry
- ❖ Sorbent injection modeled using tracer gas
- ❖ Gas analyzer used to measure distribution downstream



Modeling Comparison: CFD/Physical

Target	CFD	Physical
DSI Uniformity – Target Plane 1	6.9%	3.9%
DSI Uniformity – Target Plane 2	9.1%	7.5%
ACI Uniformity – Target Plane 1	11.4%	12.7%

- ❖ Example data comparison from recent projects
 - Data comparable between the two methods
 - Tracer gas testing for other applications (NO_x distribution, NH₃ injection) confirms good agreement

Modeling Comparison: CFD/Physical

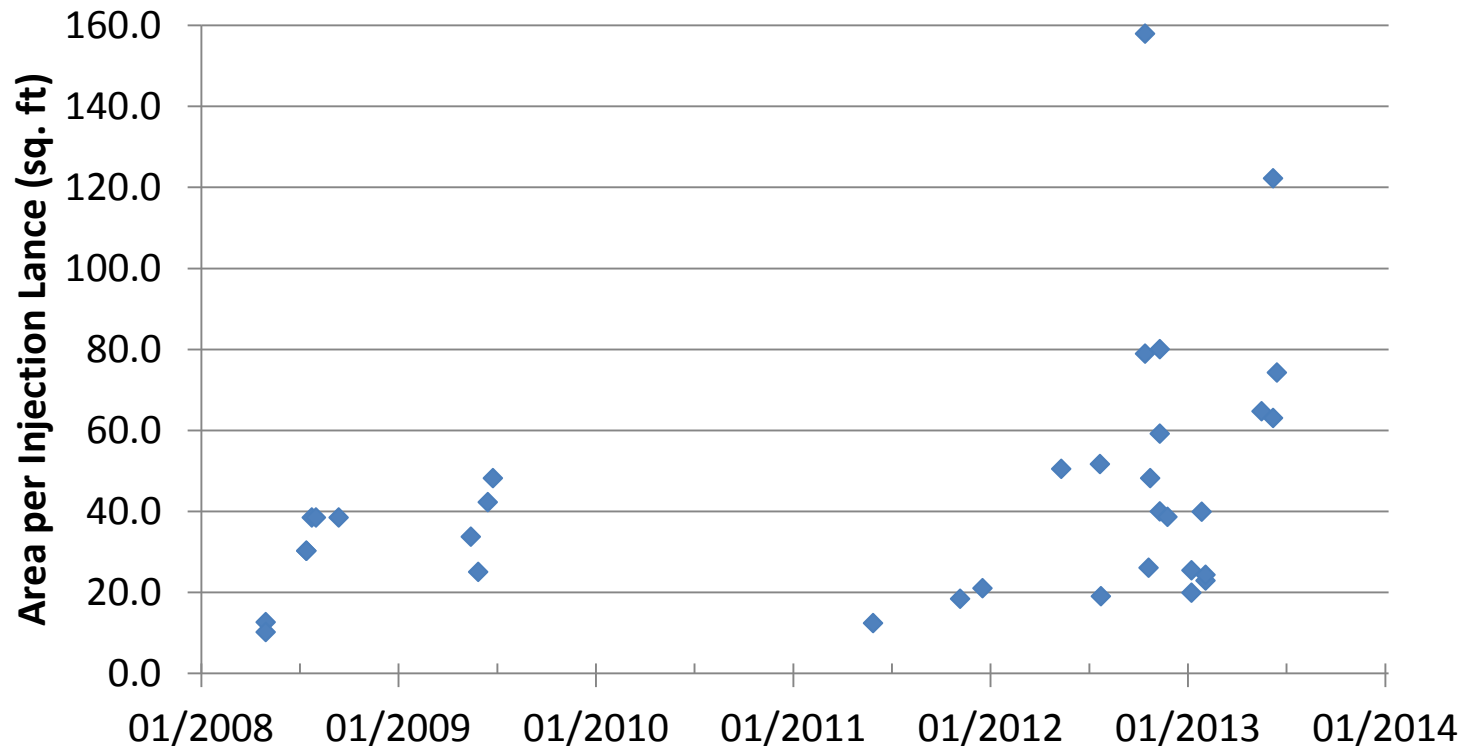
CFD	Physical
\$	\$\$
Multiple configurations investigated simultaneously	One test at a time
Can include lance details	Lance does not scale (2" dia lance not modeled as 1/6" dia lance)
More data points	Discrete data grid for analyzing mixing
Assumptions related to meshing or algorithm	Assumptions related to scaling and similarity

Future Considerations

- ❖ Typical Parameters to Consider:
 - Do you have enough lances?
 - Residence time compared to duct size.
 - Is your lance configuration well-suited for the duct aspect ratio?
 - Can the plant fans handle dp of a static mixer?
 - What is your (your client's) target plane?
 - Substantial internal trusswork?
 - You don't necessarily want the most uniform velocity profile at the injection plane.

Future Considerations

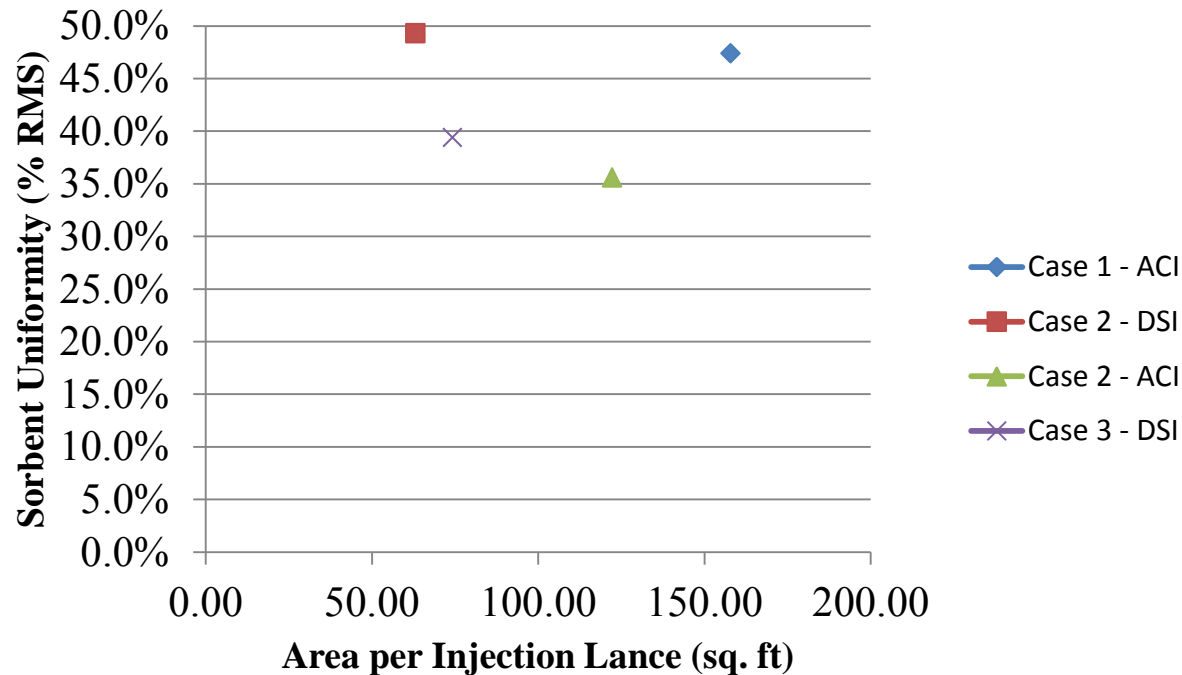
❖ Do you have enough lances?



- ❖ 40-45 square feet per lance is a good guideline.
- ❖ Adding more lances after contract award is a tough pill to swallow.

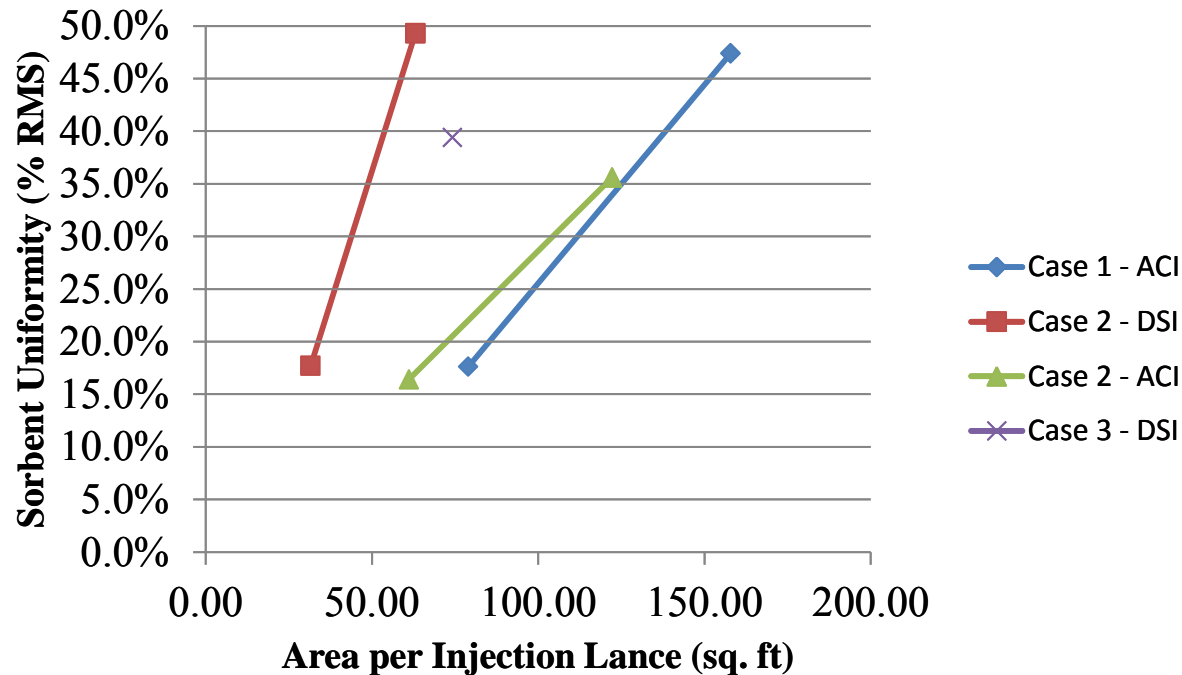
Future Considerations

❖ More Lances = Better Uniformity



Future Considerations

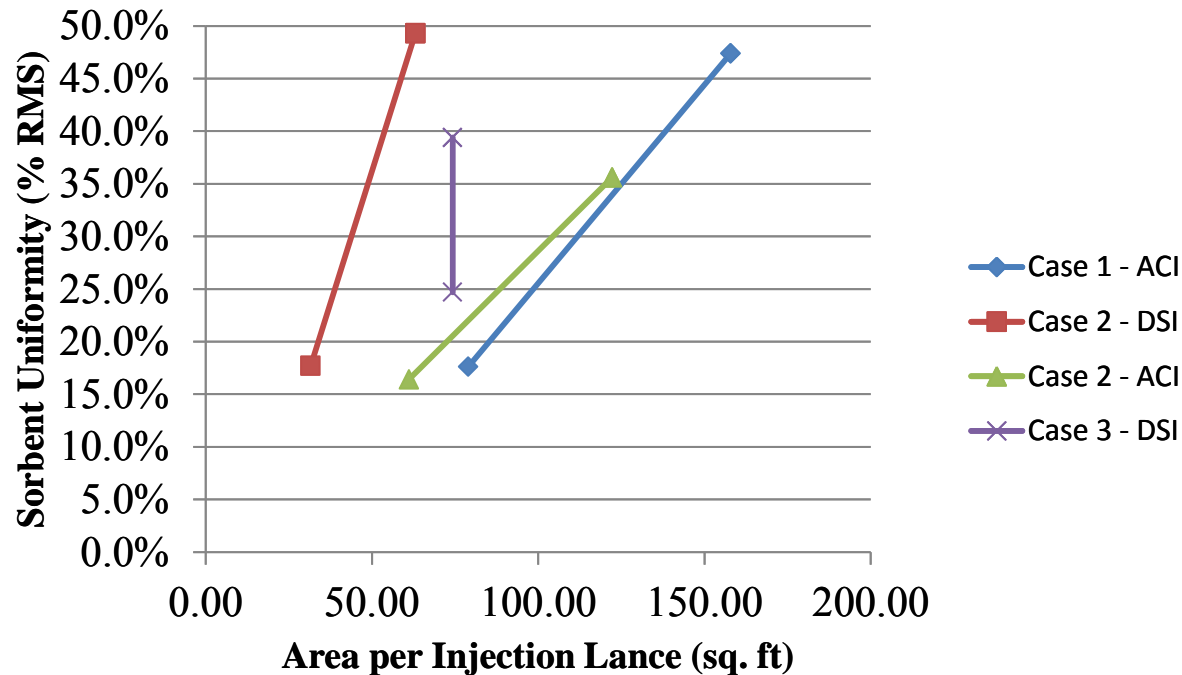
❖ More Lances = Better Uniformity



Cases 1 and 2, the number of lances had to be doubled to approach the uniformity goals.

Future Considerations

❖ More Lances = Better Uniformity

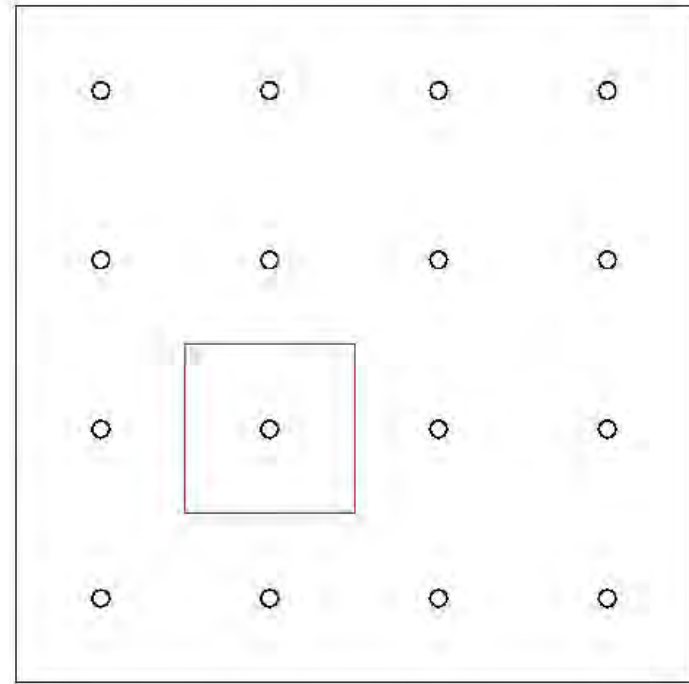
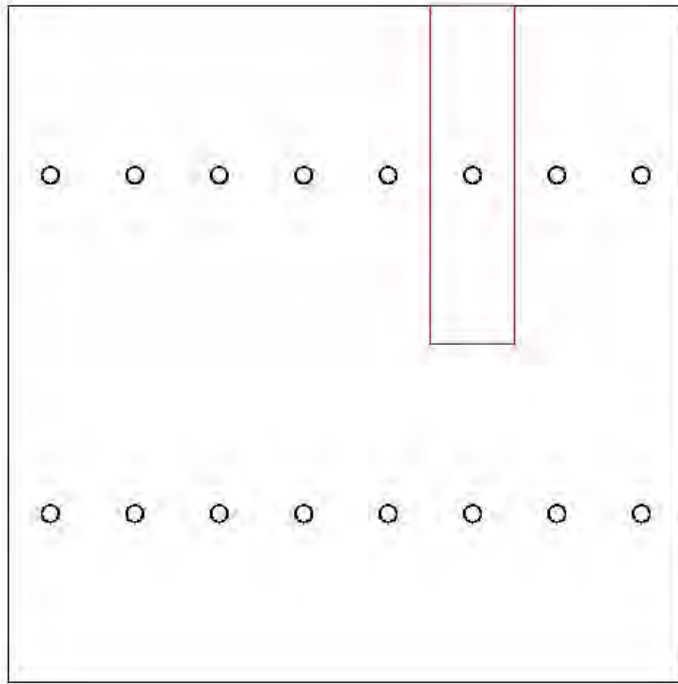


Cases 1 and 2, the number of lances had to be doubled to approach the uniformity goals.

The lance configuration was fixed for Case 3, but the addition of a low dp static mixer proved effective at significantly improving the uniformity.

Future Considerations

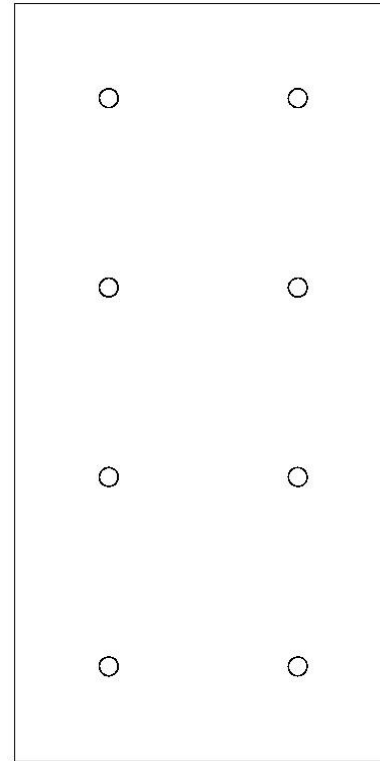
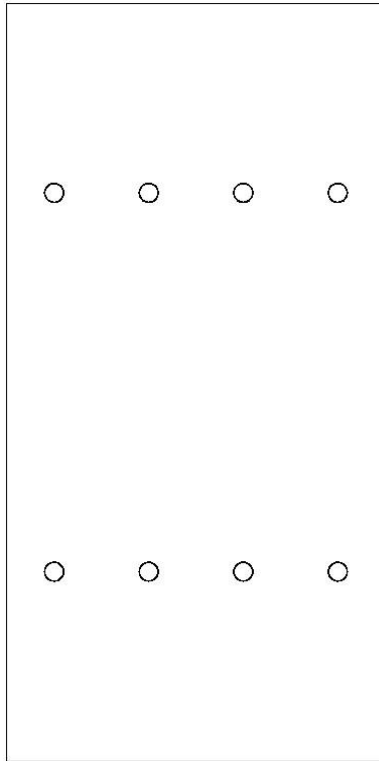
- ❖ Is your lance configuration well-suited for the duct aspect ratio?



Preferred Orientation

Future Considerations

- ❖ Is your lance configuration well-suited for the duct aspect ratio?



Preferred Orientation

Future Considerations

- ❖ Mixer?
- ❖ Pressure loss limitations
- ❖ Local or global mixing?
- ❖ Truss location and design

Future Considerations

❖ Modeling vs. Real-Life

- 15%-20% RMS is the industry standard for “uniform” distribution
- RMS required may depend on what is downstream
FF > WFGD > ESP
- How does this compare to actual system effectiveness, “Will I meet my guarantee?”
- A database of correlation data could be developed based on the many projects that have already been completed in order to give modelers, injection companies, and end users confidence regarding the system performance.

Conclusions

- ❖ Fluid dynamics and thermodynamics have significant impact on the performance of power plant equipment
- ❖ CFD/Physical modeling is used to optimize the position and arrangement of sorbent injection lances

Better uniformity  Less sorbent usage  Reduced operating cost

Questions?

Matt Gentry

734-525-0300

mgentry@airflowsciences.com

